

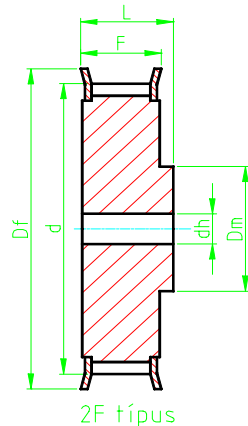
Bordáskerék XH típusú bordásszíjhoz

Osztás: t= 7/8 "

22,225 mm

Bordáskerek anyaga:

2F típusnál: **Acél (St)**



méret mm-ben

Szíjszélesség	Fog-szám	Kivitel	Osztókör- átmérő do	Külső átmérő d	Perem- átmérő Df	F	Teljes szélesség L	Dm	Di	dh	Rendelési szám
2"	18	2F	127,34	124,55	138	65,0	80,0	100	-	24	XH2"18
2"	19	2F	134,41	131,62	146	65,0	80,0	100	-	24	XH2"19
2"	20	2F	141,49	138,70	154	65,0	80,0	100	-	24	XH2"20
2"	21	2F	148,56	145,77	160	65,0	80,0	110	-	24	XH2"21
2"	22	2F	155,64	152,85	168	65,0	80,0	110	-	24	XH2"22
2"	24	2F	169,79	167,00	183	65,0	80,0	120	-	24	XH2"24
2"	25	2F	176,86	174,07	188	65,0	80,0	120	-	24	XH2"25
2"	26	2F	183,94	181,15	198	65,0	80,0	120	-	24	XH2"26
2"	27	2F	191,01	188,22	200	65,0	80,0	120	-	24	XH2"27
2"	28	2F	198,08	195,29	211	65,0	80,0	120	-	24	XH2"28
2"	30	2F	212,23	209,44	226	65,0	80,0	120	-	24	XH2"30
2"	32	2F	226,38	223,59	240	65,0	80,0	120	-	24	XH2"32
2"	34	2F	240,53	237,74	256	65,0	80,0	120	-	24	XH2"34
3"	18	2F	127,34	124,55	138	92,0	110,0	100	-	28	XH3"18
3"	19	2F	134,41	131,62	146	92,0	110,0	100	-	28	XH3"19
3"	20	2F	141,49	138,70	154	92,0	110,0	100	-	28	XH3"20
3"	21	2F	148,56	145,77	160	92,0	110,0	110	-	28	XH3"21
3"	22	2F	155,64	152,85	168	92,0	110,0	110	-	28	XH3"22
3"	24	2F	169,79	167,00	183	92,0	110,0	120	-	28	XH3"24
3"	25	2F	176,86	174,07	188	92,0	110,0	120	-	28	XH3"25
3"	26	2F	183,94	181,15	198	92,0	110,0	120	-	28	XH3"26
3"	27	2F	191,01	188,22	200	92,0	110,0	120	-	28	XH3"27
3"	28	2F	198,08	195,29	211	92,0	110,0	120	-	28	XH3"28
3"	30	2F	212,23	209,44	226	92,0	110,0	120	-	28	XH3"30
3"	32	2F	226,38	223,59	240	92,0	110,0	120	-	28	XH3"32
3"	34	2F	240,53	237,74	256	92,0	110,0	120	-	28	XH3"34
4"	18	2F	127,34	124,55	138	119,0	132,0	100	-	32	XH4"18
4"	19	2F	134,41	131,62	146	119,0	132,0	100	-	32	XH4"19
4"	20	2F	141,49	138,70	154	119,0	132,0	100	-	32	XH4"20
4"	21	2F	148,56	145,77	160	119,0	132,0	110	-	32	XH4"21
4"	22	2F	155,64	152,85	168	119,0	132,0	110	-	32	XH4"22
4"	24	2F	169,79	167,00	183	119,0	132,0	120	-	32	XH4"24
4"	25	2F	176,86	174,07	188	119,0	132,0	120	-	32	XH4"25
4"	26	2F	183,94	181,15	198	119,0	132,0	120	-	32	XH4"26
4"	27	2F	191,01	188,22	200	119,0	132,0	120	-	32	XH4"27
4"	28	2F	198,08	195,29	211	119,0	132,0	120	-	32	XH4"28
4"	30	2F	212,23	209,44	226	119,0	132,0	120	-	32	XH4"30
4"	32	2F	226,38	223,59	240	119,0	132,0	120	-	32	XH4"32
4"	34	2F	240,53	237,74	256	119,0	132,0	120	-	32	XH4"34